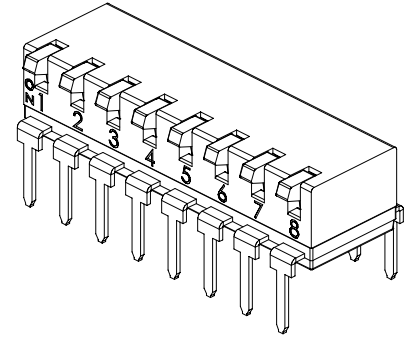
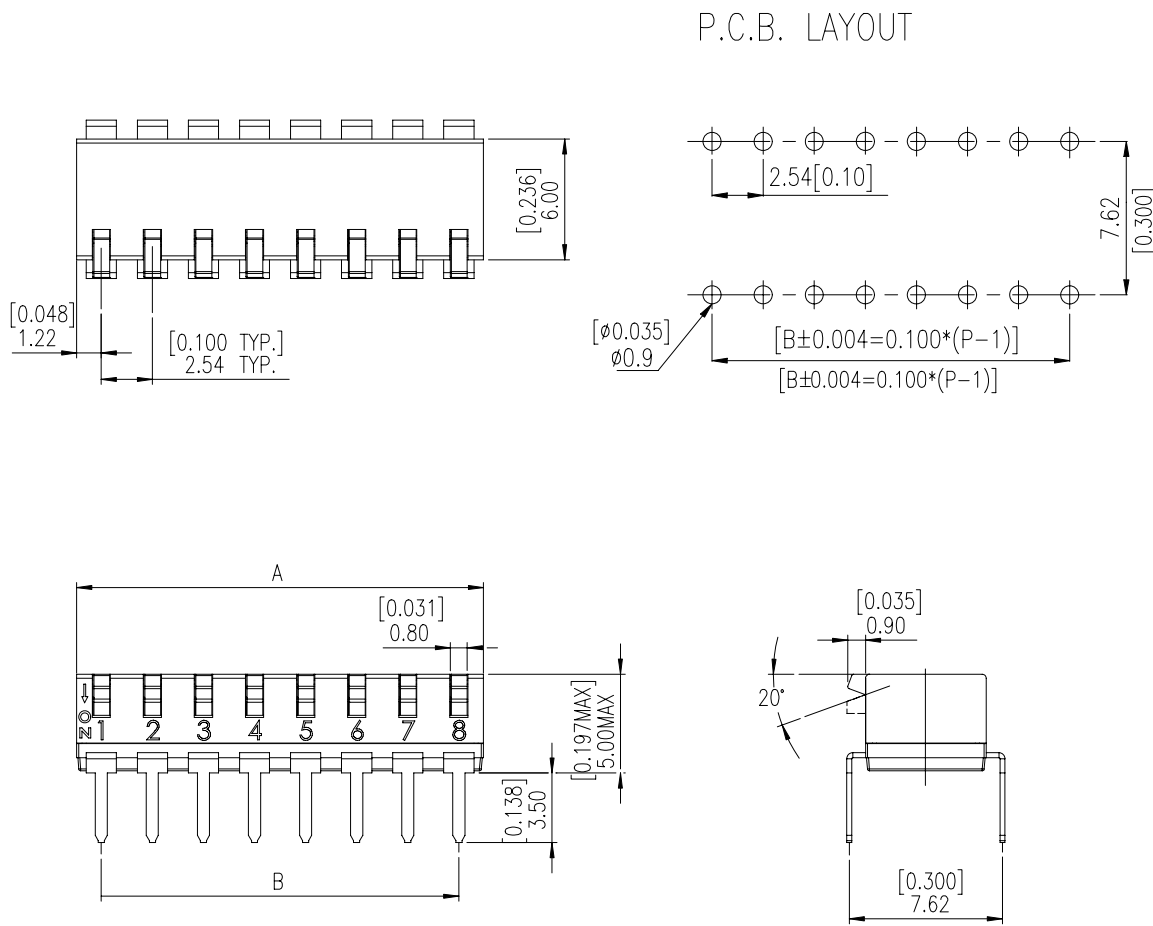


EPI & EPM SERIES

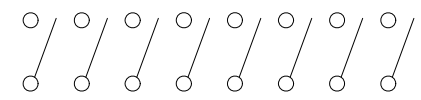
DIMENSIONS

EPI(R)



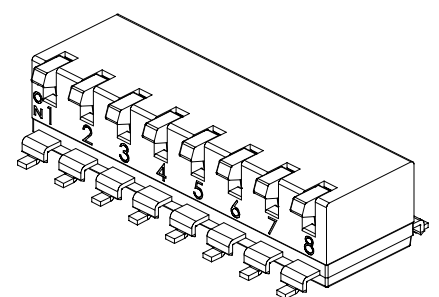
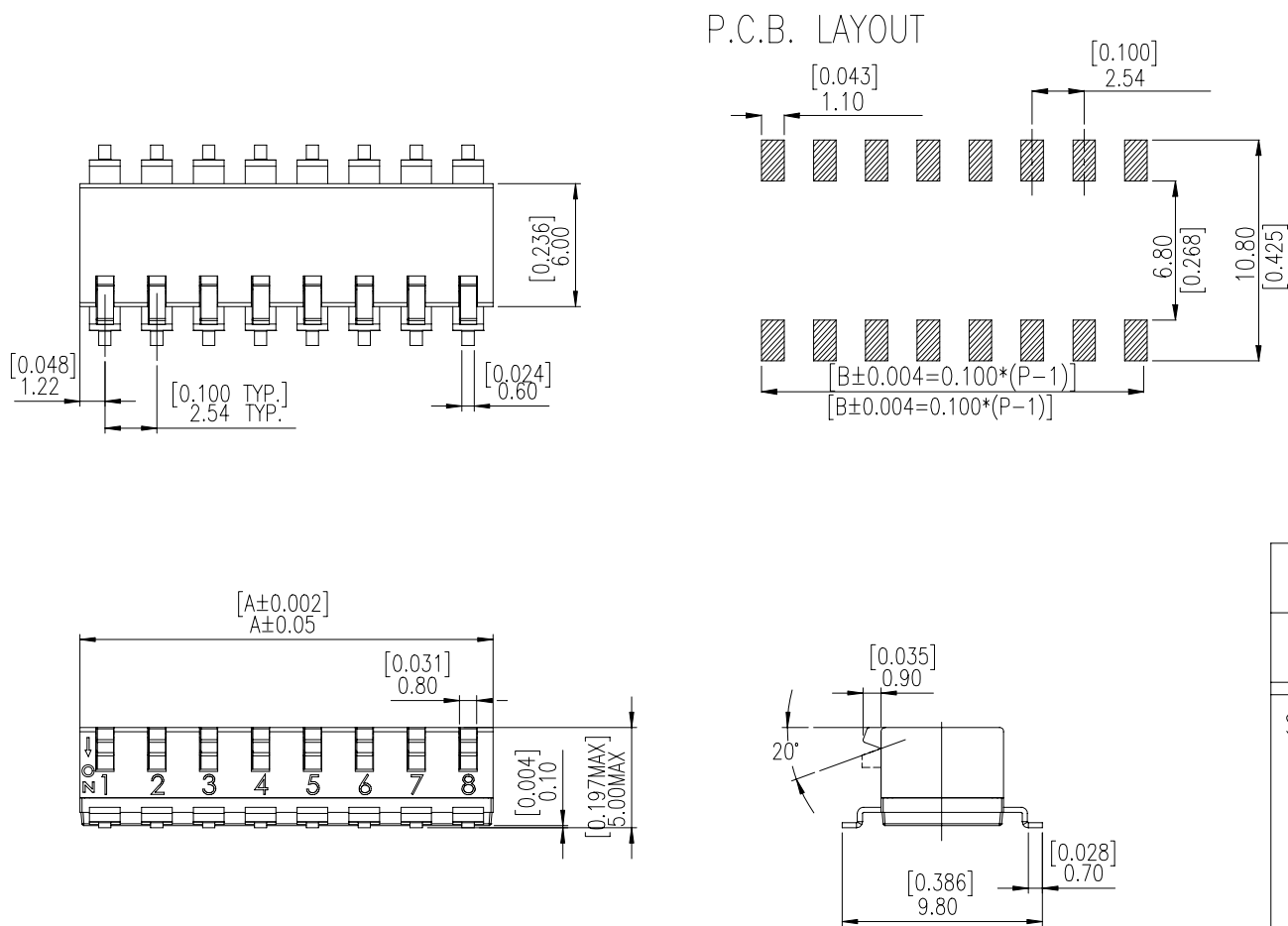
PROD. NO.	NO. OF POS.	DIM. A	DIM. B
EPM-08	8	20.22[.796]	17.78[.700]

SCHEMATIC(TYP.)



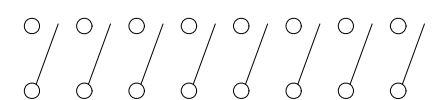
CIRCUIT DIAGRAM

EPM(R)



PROD. NO.	NO. OF POS.	DIM. A	DIM. B
EPM-08	8	20.22[.796]	17.78[.700]

SCHEMATIC(TYP.)



CIRCUIT DIAGRAM

HOW TO ORDER

EP - - V -

Package Style:

=Tube

T/R=Tape & Reel

Soldering:

V=Lead Free Solderable

Number Of Positions:

02,04,06,08,10 Positions.

(04,08 Poles Available Now)

Actuator Type:

=Long Actuator

R=Short Actuator

Terminal Type:

I=Through Hole Type

M=SMT Type

End-Stackable Plano Type Dip Switch

SPECIFICATION

△MECHANICAL

Operation Force: 800gf max.

Operation Temperature Range: -20°C to +85°C.

Storage Temperature Range: -40°C to +85°C.

Mechanical Life: 2,000 cycles.

Vibration Test: MIL-STD-202F METHOD 201A.

Frequency: 10-55-10Hz/1 min.

Directions: X,Y,Z, three mutually perpendicular directions.

Time: 2 hours each direction.

High Reliability.

Shock Test: MIL-STD-202F METHCD 213B.

CONDITION A.

Gravity: 50G(peak value), 11 msec.

Direction and times: 6 sides and 3 times in each direction.

High reliability.

△ELECTRICAL

Electrical Life: 2,000 cycles.

Rating: 25mA,24VDC

Contact Resistance: 100mΩ max, at 500 VDC.

Insulation Resistance: 100mΩ max, at 500 VDC.

Dielectric Strength: 500VAC / 1 minute.

Circuit: Single pole single throw.

MATERIALS

△COVER: UL94V-0 Nylon High-Temp Thermoplastic.

Color: Black

△BASE: UL94V-0 Nylon High-Temp Thermoplastic.

Color: Black

△STEM: UL94V-0 Nylon High-Temp Thermoplastic.

Color: White

△CONTACT: Alloy Copper with gold cladding.

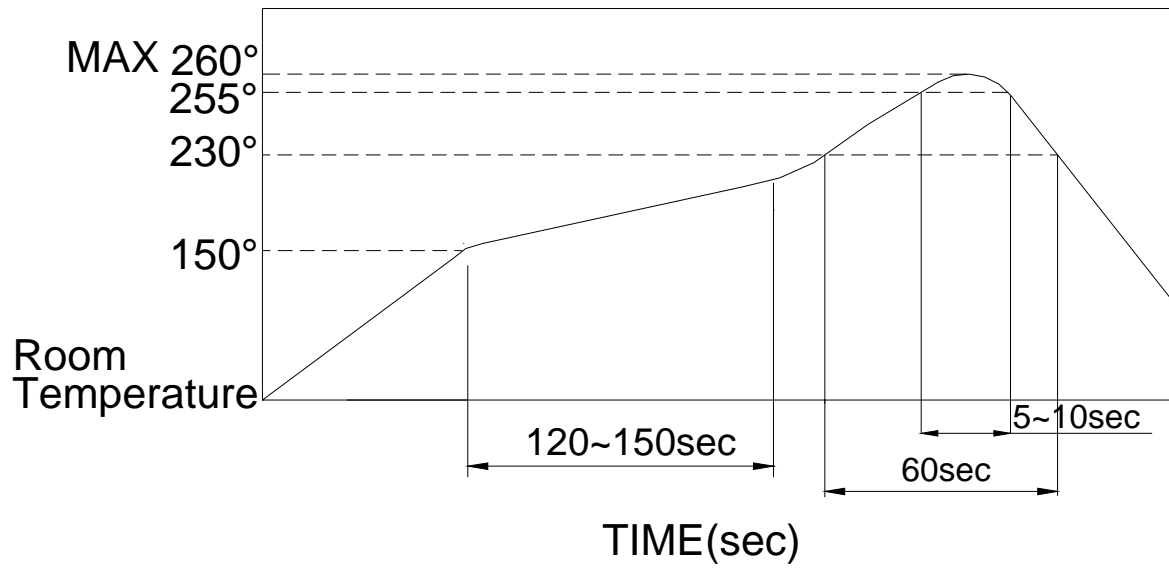
△TERMINAL : Brass with gold cladding.

SOLDERING PROCESS

△**HAND SOLDERING**: Use a soldering iron of 30 watts, controlled at 350°C approximately Max 5 seconds while applying.

△**REFLOW SOLDERING** : Vapor phase & reflow soldering can be applied.

△**Temperature Profile** :



PACKING

Part Number	Number Per TUBEI	Number Per Reel
EPI-08,EPM-08	21	
EPI-04,EPM-04	38	
EPM-04.08	-	800