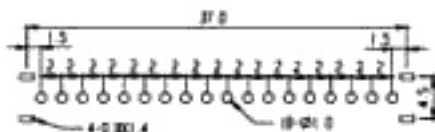


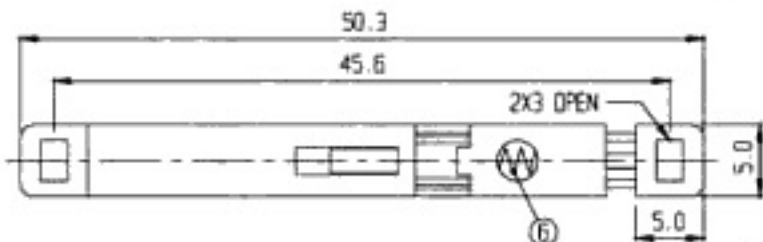
SHORTING



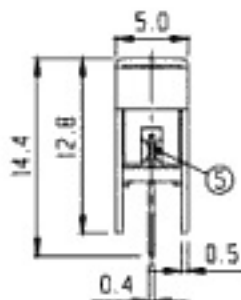
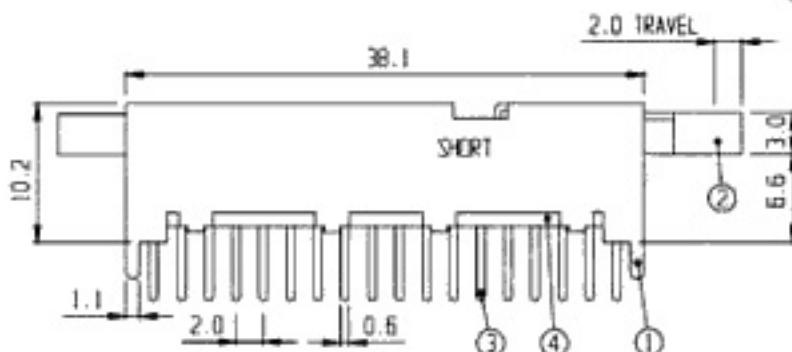
SCHEMATIC



PCB LAYOUT



RoHS Compliance



5	CONTACT	P B S	6	Ag PLATED	6	SPRING	STEEL WIRE	1	
3	TERMINAL	BRASS	18	Ag PLATED	4	TERMINAL BASE	PHENOL RESIN	1	NATURAL
1	FRAME	S P C C	1	Ni PLATED	2	KNOB	A B S	1	
NO	PART	MATERIAL	QTY	REMARKS	NO	PART	MATERIAL	QTY	REMARKS

ISSUED

SPECIFICATION

TITLE: PUSH SLIDE SWITCH (6P2T)
(SHORTING)



RATING: DC 30V 0.3A

MODEL NO: PS-62D01

CONTACT RESISTANCE: 30mΩ max.

INSULATION RESISTANCE: 500MΩ at 500V DC

TOLERANCE UNIT: MM

DWN.

WITHSTAND VOLTAGE: AC 500V for 1 minute

UP TO 1.0:±0.1

SCALE: 2:1

CHK'D.

OPERATION FORCE: REFER ATTACH SPECIFICATION

1.0 TO 10.0:±0.2

VERSION: 01

SWITCHING LIFE: 10X cycles min.

OVER 10.0:±0.3

DRWG NO:

APPD.