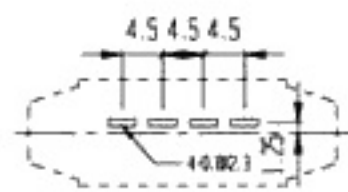
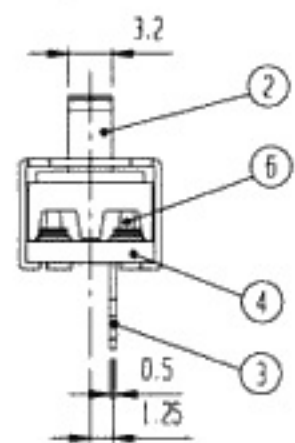
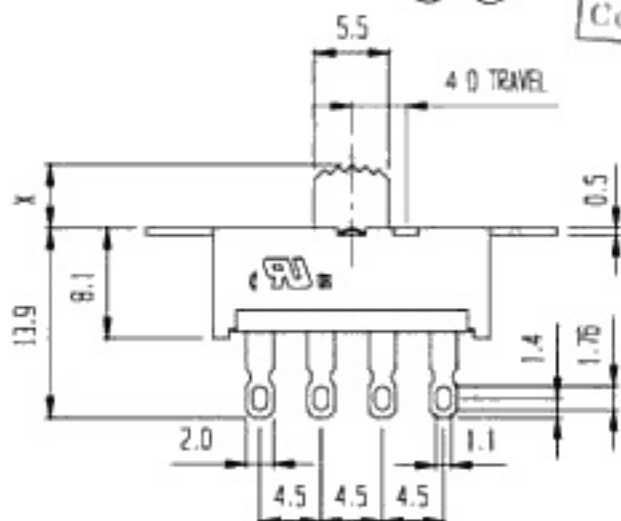


SCHWATIC



P.C.B. LAYOUT

RoHS Compliance



| 7 | SPRING PLATE | P B S | 2 | |
|-----|--------------|----------|-----|-----------|
| 5 | SPRING PLATE | S U S | 1 | |
| 3 | TERMINAL | Cu | 4 | Ag PLATED |
| 1 | FRAME | SPCC | 1 | Zn PLATED |
| NO. | PART | MATERIAL | QTY | REMARKS |

| 6 | CONTACT | Cu | 2 | Ag PLATED |
|-----|---------------|----------|-----|-----------|
| 4 | TERMINAL BASE | 94 vo | 1 | NATURAL |
| 2 | KNOB | PBT vo | 1 | A 3-13 |
| NO. | PART | MATERIAL | QTY | REMARKS |

ISSUED

SPECIFICATION

TITLE: AC POWER SWITCH (1P3T)



RATING: 1.5A 250V AC/3A 125V AC
 CONTACT RESISTANCE: 30mΩ max.
 INSULATION RESISTANCE: 500MΩ AT 500V DC
 WITHSTAND VOLTAGE: AC 1000V for 1 minute
 OPERATION FORCE: REFER ATTACH SPECIFICATION
 SWITCHING LIFE: 6K cycles min.

MODEL NO: WS-13H01-F-A()

| | | | |
|------------------|-------------|--------|-----|
| TOLERANCE | UNIT: MM | DWN. | hoo |
| UP TO 1.0:±0.1 | SCALE: 2:1 | CHK'D. | hoo |
| 1.0 TO 10.0:±0.2 | VERSION: 02 | APPD. | hoo |
| OVER 10.0:±0.3 | DRWG NO: | | |