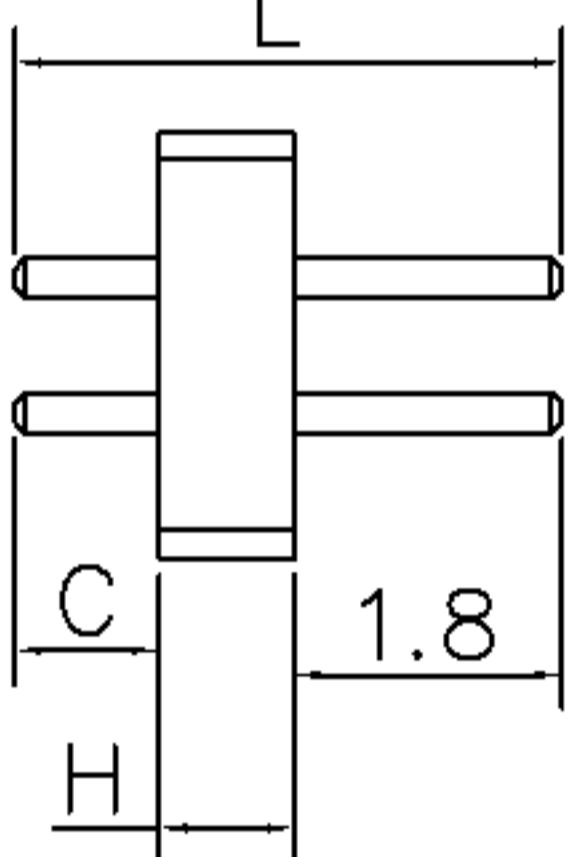
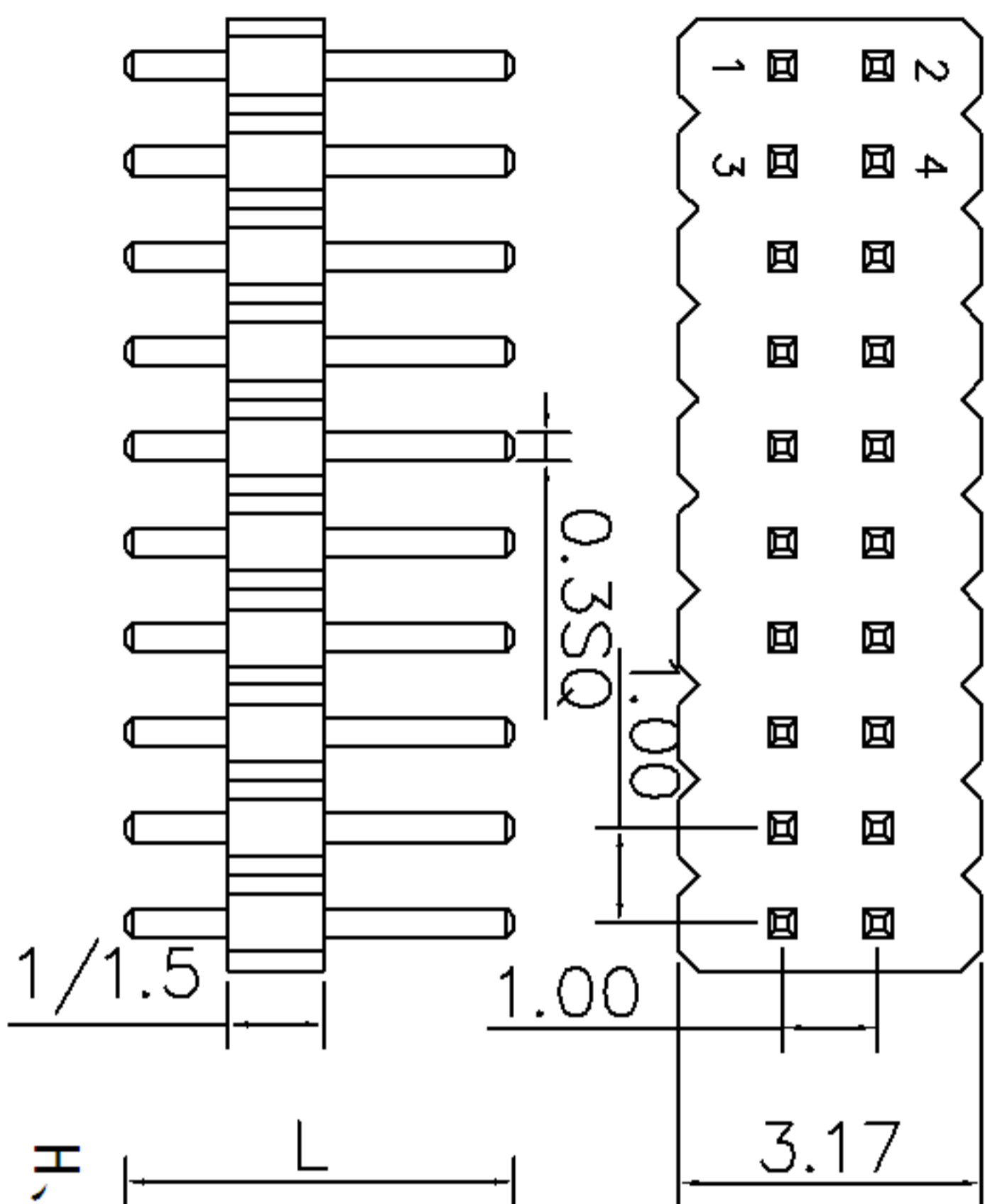
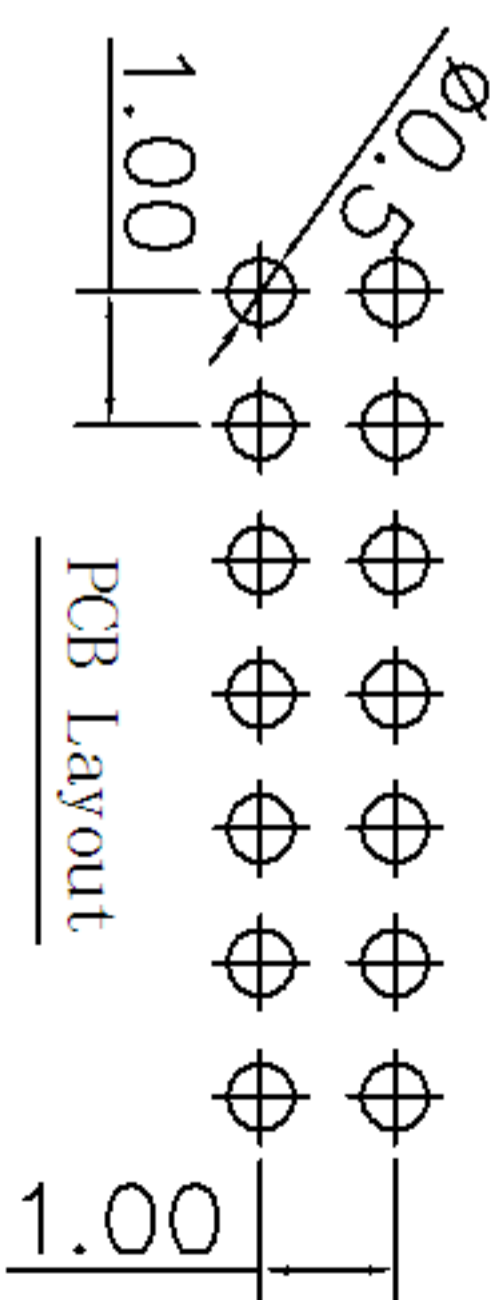


A	新版图	/	LZW
		2012.05.23	



H、L、C的尺寸
可依客户要求订做

Technical Data:
 Material:
 Contact Material: Brass
 Insulator Material: PA6T+30%GF
 Electrical:
 Current rating: 0.75Amps/Contact max.
 Contact resistance: ≤ 20 mohms/Contact
 Insulation resistance: ≥ 1000 Mohms at V=100V
 Withstanding Voltage: 300V AC/Minute
 Mechanical:
 Operating Temperature: Gold plated :-55° C~105°
 Tin plated :-40° C~105°
 Soldering Temperature: 260° C 10s Max.



1101-100S12XX-H-L
 1.00PIN距单塑胶双
 排直插排针系列
 塑高
 总高

每排PIN数

TOLERANCE		DRAWN	DATE	武汉宇恒电子有限公司 WUHAN YUHENG ELECTRONIC CO., LTD
ON	TOL	LZW	2012.05.23	
XXX±	0.05	CHECKED	DATE	TITLE:
XX±	0.15	CLIENT APPROVED	DATE	排针系列-1.00 PIN距-双排-单塑形
X+	0.20	DATE	DATE	REQ NO
X±	0.30	DATE	DATE	CLIENT P/N
		DATE	DATE	UNIT: mm
		DATE	DATE	SCALE: free
		DATE	DATE	FILE NO.: YH20120601A011