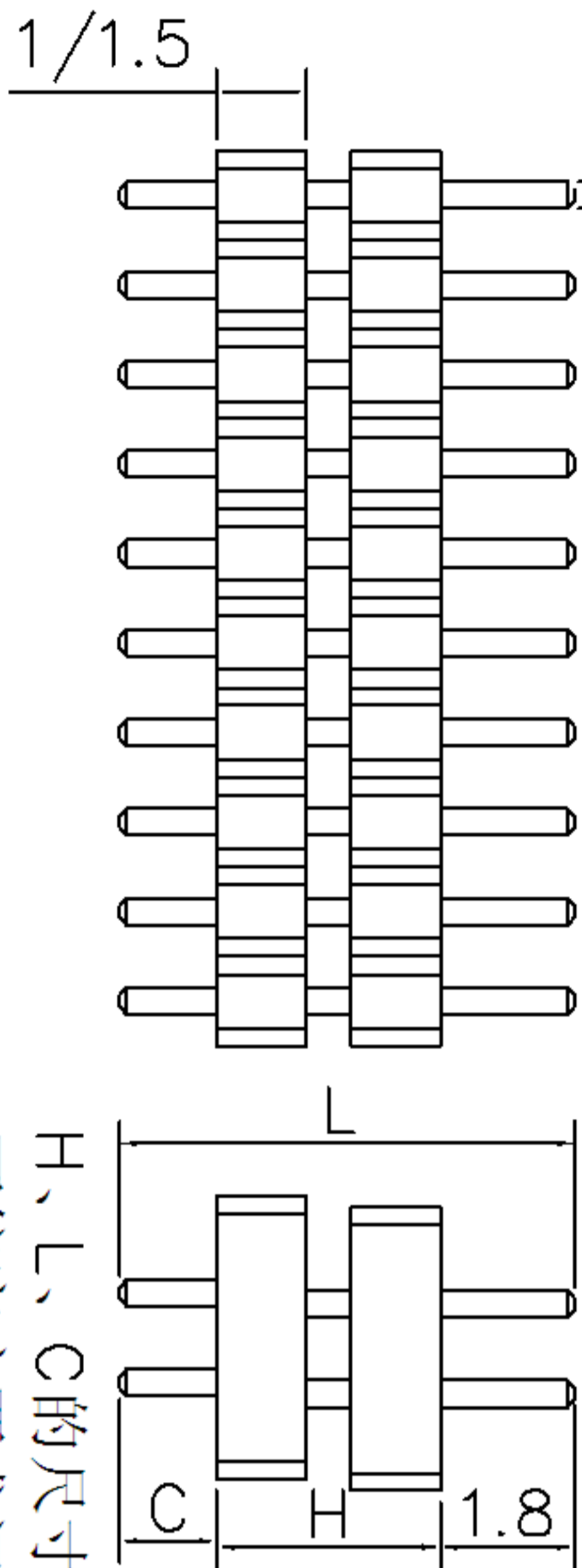
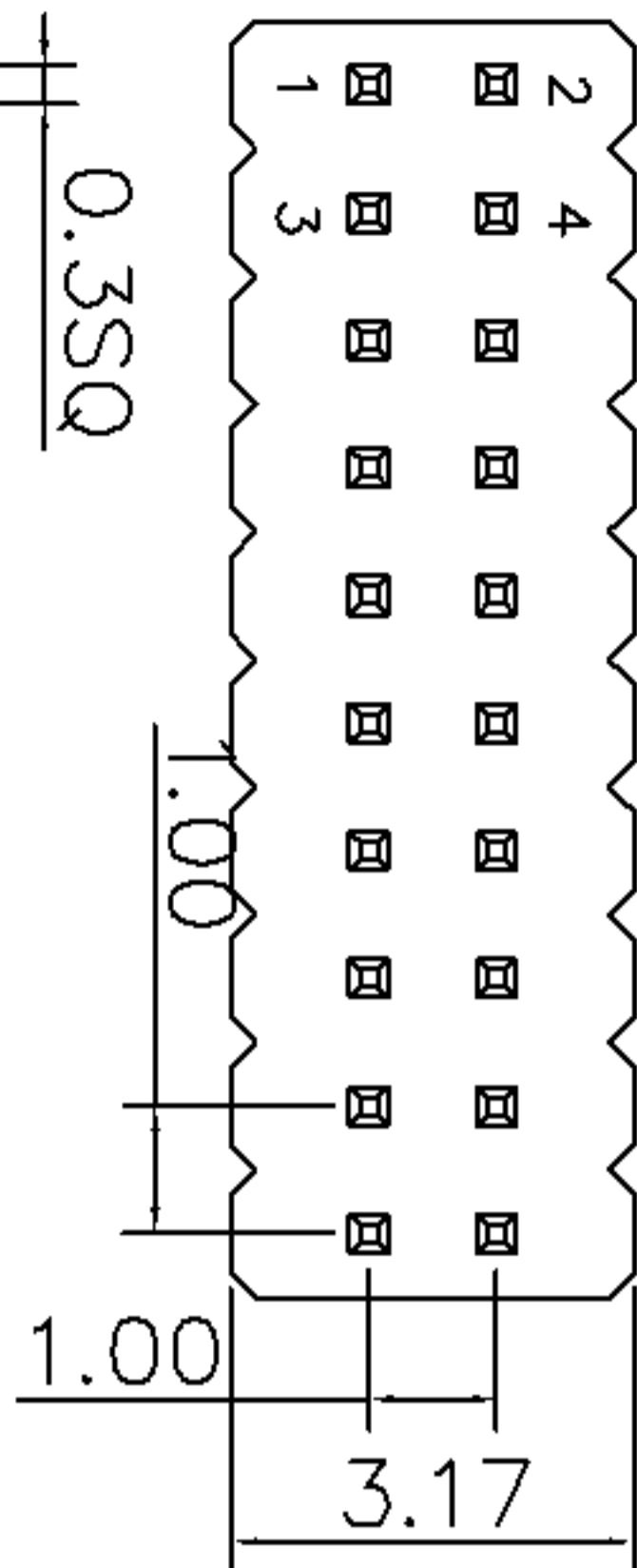


A	新版图	/	LZW
			2012.05.23



H、L、C的尺寸
可依客户要求订做

Technical Data:

Material:

Contact Material: Brass

Insulator Material: PA6T+30%GF

Electrical:

Current rating: 0.75Amps/Contact max.

Contact resistance: ≤ 20 mohms/Contact

Insulation resistance: ≥ 1000 Mohms at $V=100V$

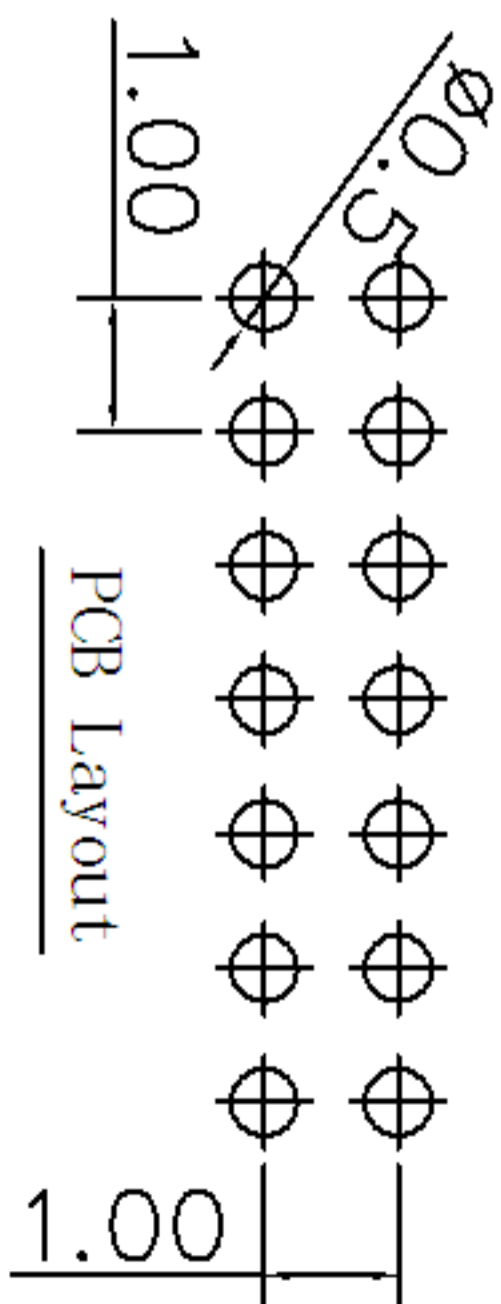
Withstanding Voltage: 300V AC/Minute

Mechanical:

Operating Temperature: Gold plated : -55° C~105°

Tin plated : -40° C~105°

Soldering Temperature: 260° C 10s Max.



1101-400S22XX-H-L

1.00PIN距双塑胶双

排直插排针系列

每排PIN数

塑高

总高

TOLERANCE		ANGLE
TOL ON		
.XXX±	0.05	
XX±	0.15	1°
X+	0.20	2°
X±	0.30	

DRAWN	DATE	 武汉宇恒电子有限公司 WUHAN YUHENG ELECTRONIC CO., LTD
LZW	2012.05.23	
CHECKED	DATE	TITLE:
CLIENT APPROVED	DATE	排针系列-1.00 PIN距-双排-双塑形
REQ NO		
CLIENT P/N		
UNIT: mm	SCALE: free	
FILE NO.: YH20120601A012		