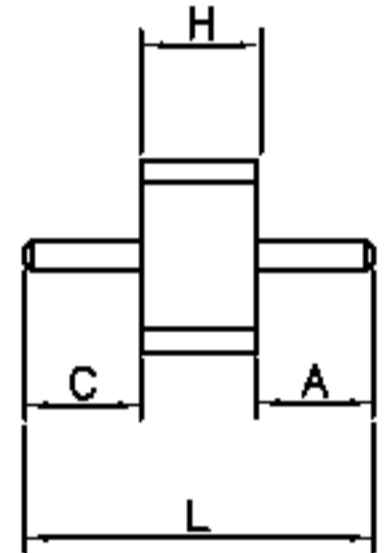
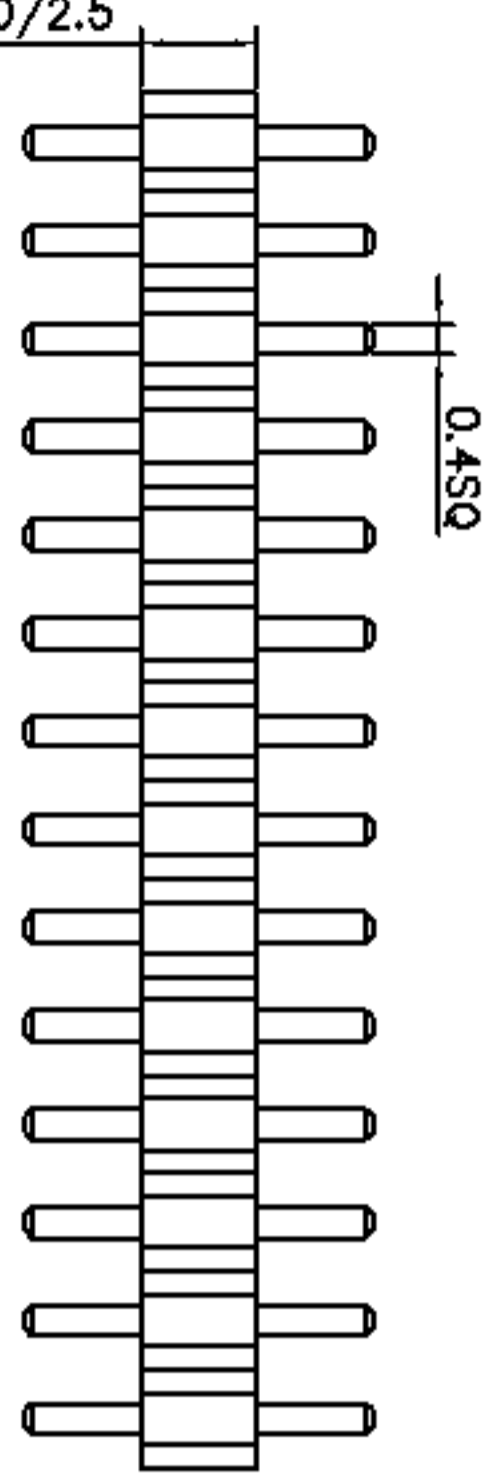
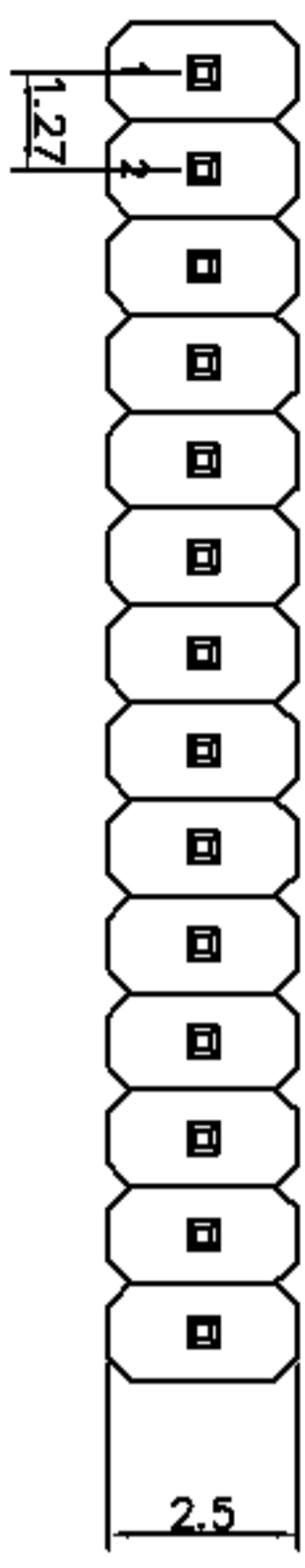


A	新版图	/	LZW



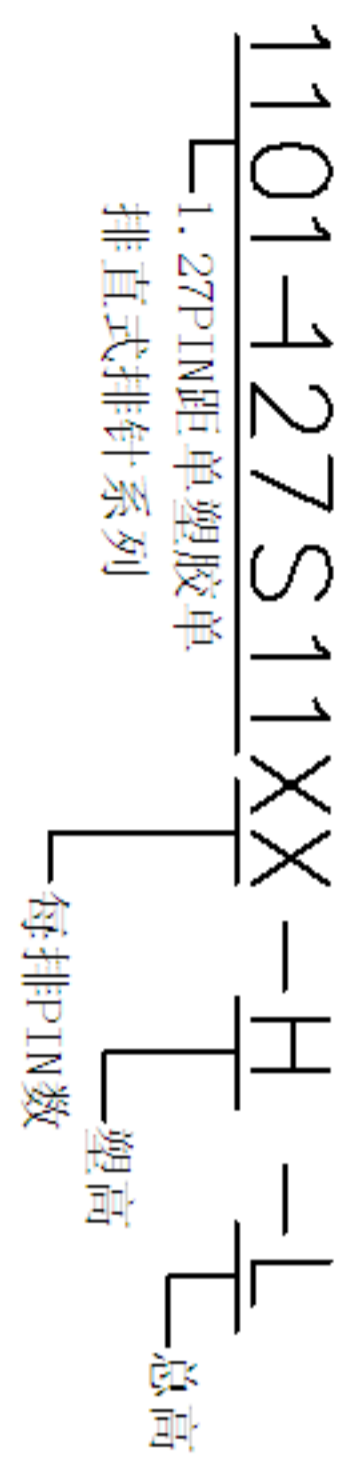
A、C、H、L的尺寸
可依客户要求订做



PCB Layout

Specification:

- Current Rating: 1 Ampere
- Insulation Resistance : 1000M ohms Min.
- Dielectric Withstanding : 300V AC
- Contact Resistance: 20m ohms Max.
- Operating temperature: -40° C to +105° C
- Material:
- Contact: Brass, Gold Flash or per Require
- Housing: Nylon6T UL 94V-0



TOLERANCE		ANGLE
TOL ON		
.XXX =	0.05	
.XX =	0.15	1°
X -	0.20	2°
X. =	0.30	

DRAWN	DATE	 武汉宇恒电子有限公司 WUHAN YUHENG ELECTRONIC CO., LTD
LZW	2011. 09. 07	
CHECKED	DATE	TITLE:
CLIENT APPROVED	DATE	排针系列-1.27PIN距-单排 单塑胶-直式
RFQ NO		
CLIENT P/N		
UNIT :	SCALE: free	
FILE NO. :	YH20120525A011	