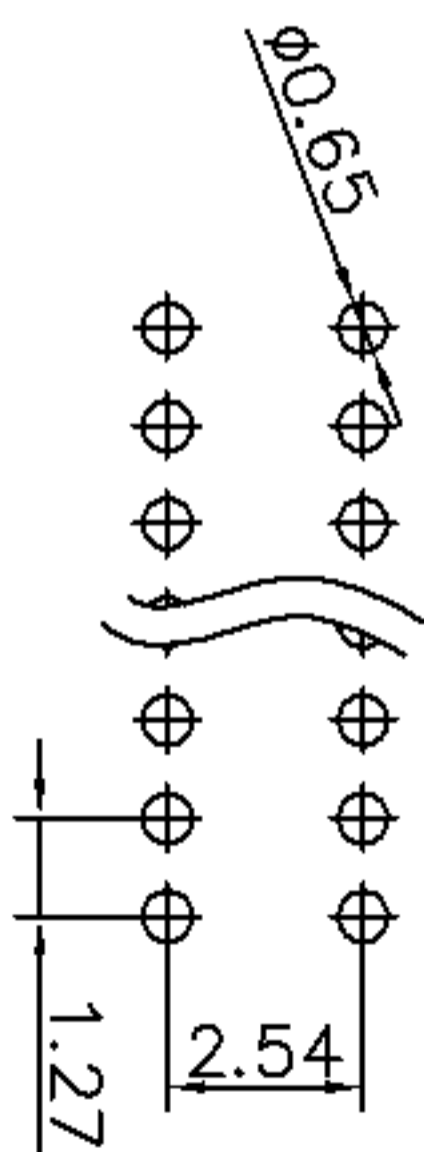
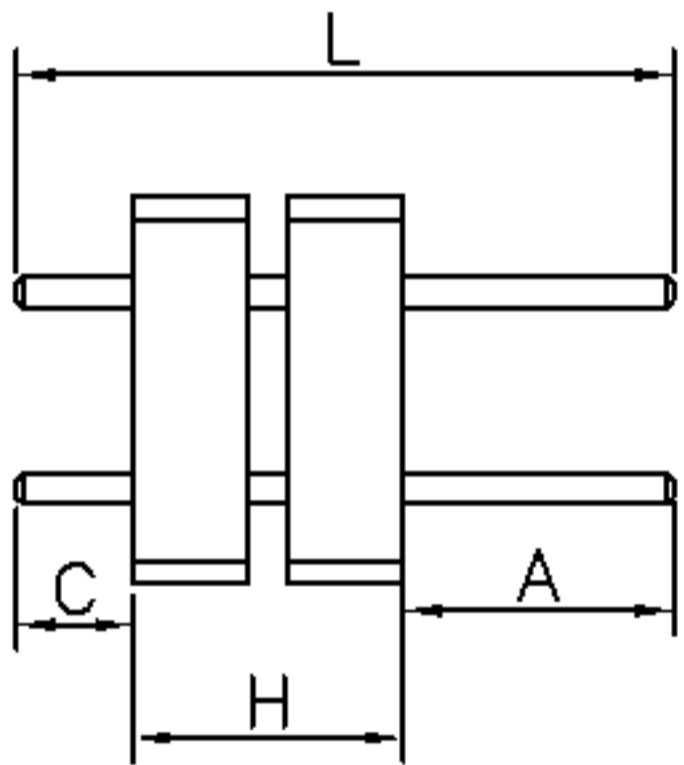
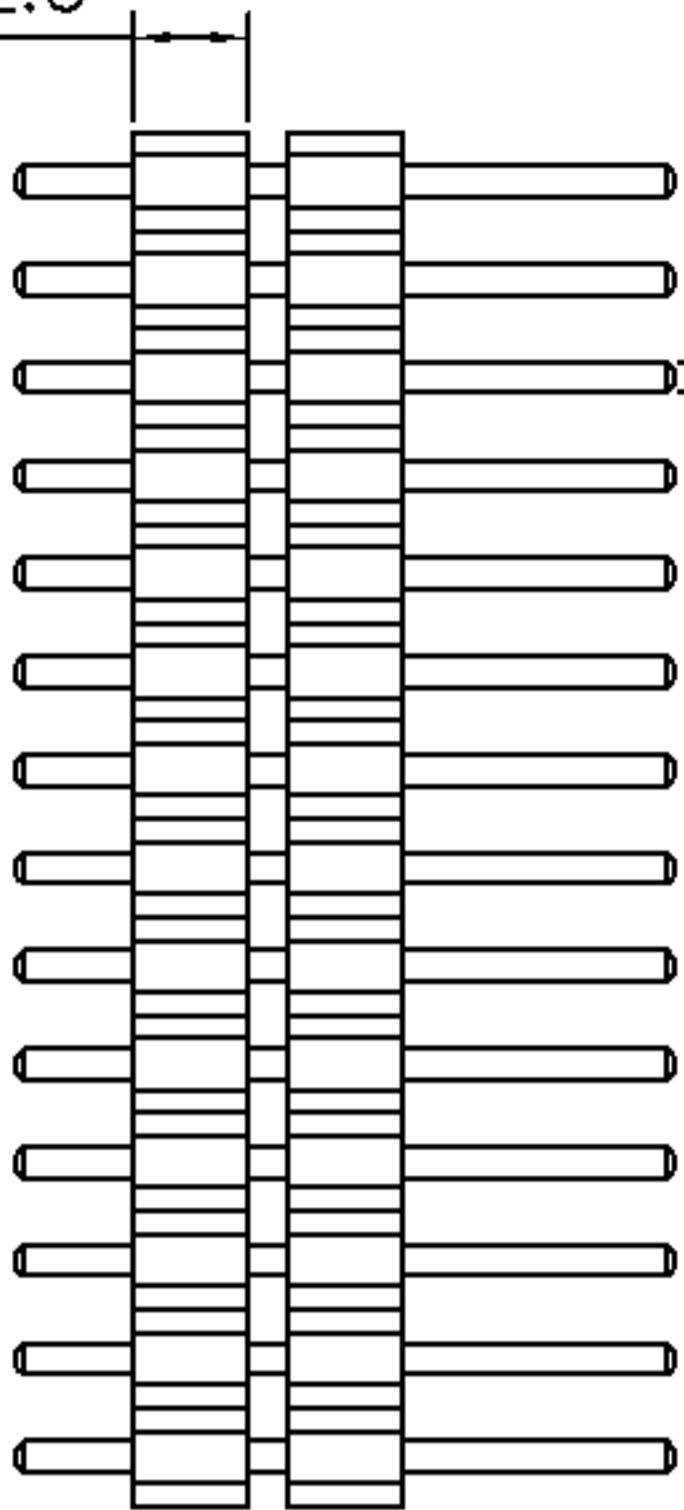
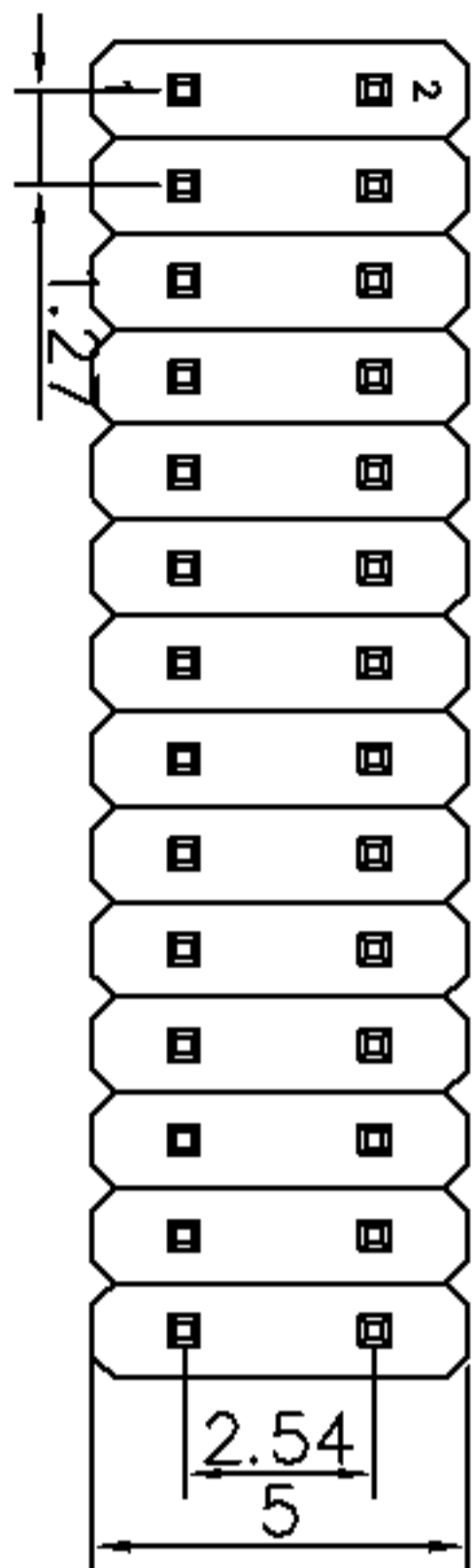


A			
	新版图	/	2011.09.07
			L2M



PCB Layout

Specification:

- Current Rating: 1 Ampere
- Insulation Resistance : 1000M ohms Min.
- Dielectric Withstanding : 300V AC
- Contact Resistance: 20m ohms Max.
- Operating temperature:-40° C to +105° C
- Material:
- Contact: Brass, Gold Flash or per Require
- Housing: Nylon6T UL 94V-0

H、L、A、C的尺寸
可依客户要求订做

1.0/1.5/1.6/1.7/2.0/2.5

1101-427S22XXA-H-L
1.27PIN距双塑胶双
排直式排针系列

塑高
A: 两排针排距2.54
B: 两排针排距1.27
每排PIN数

TOLERANCE		ANGLE
TOL		
ON	0.05	
.XXX =	0.15	1°
XX =	0.20	2°
X =	0.30	

DRAWN	DATE	 武汉宇恒电子有限公司 WUHAN YUHENG ELECTRONIC CO., LTD
YSH	2011.09.07	
CHECKED	DATE	TITLE:
		排针系列-1.27*2.54PIN距-双排 双塑胶-直式
CLIENT APPROVED	DATE	RFQ NO
		CLIENT P/N
		UNIT: mm
		SCALE: free
		FILE NO.: YH20120525A013