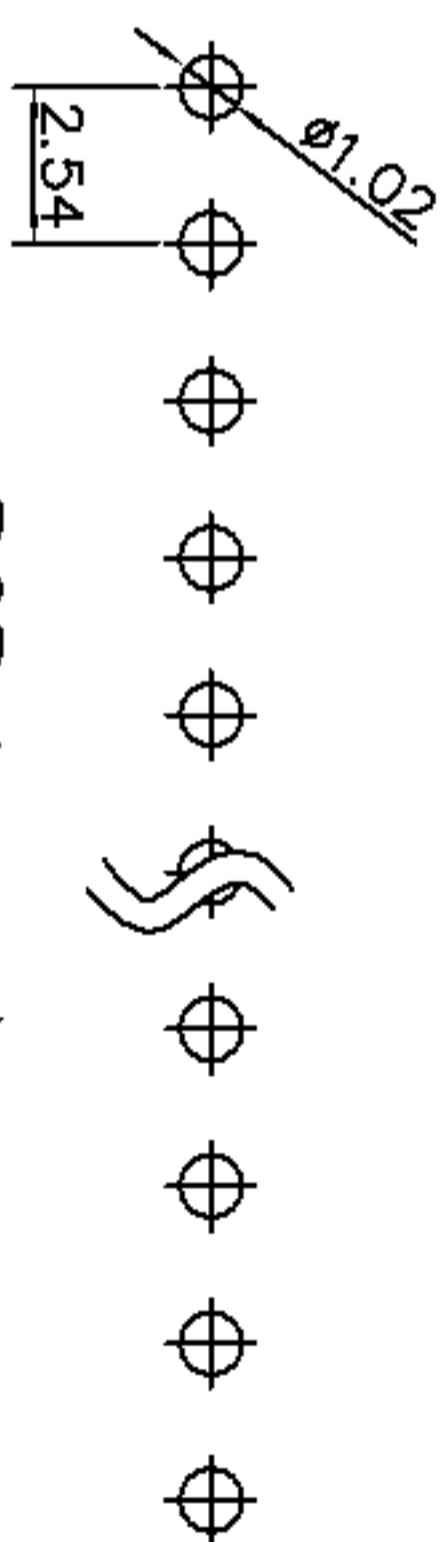
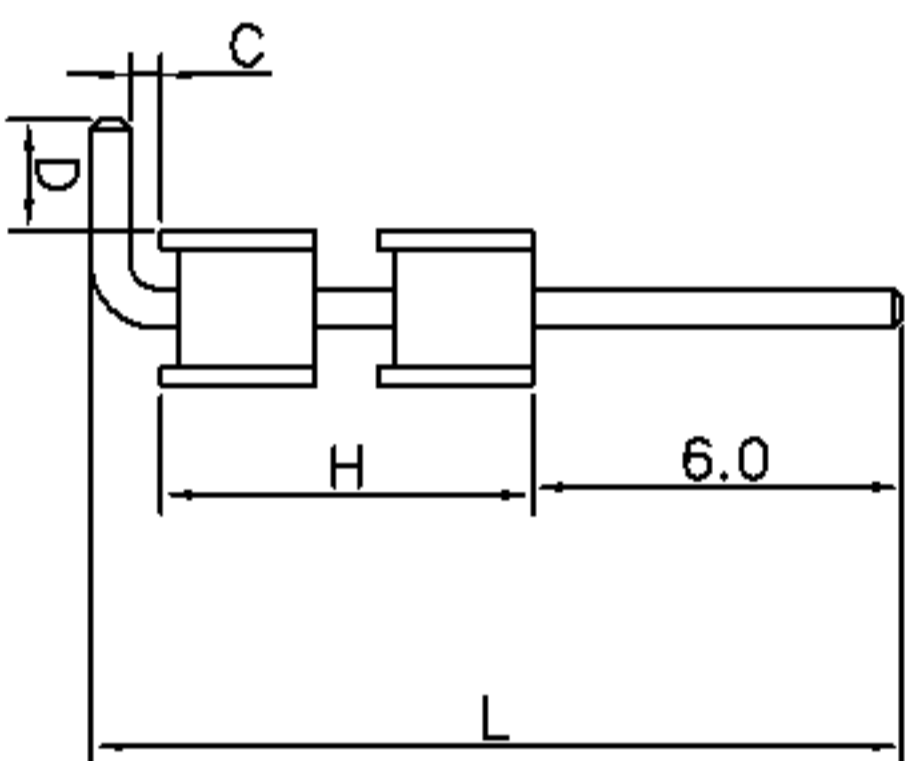
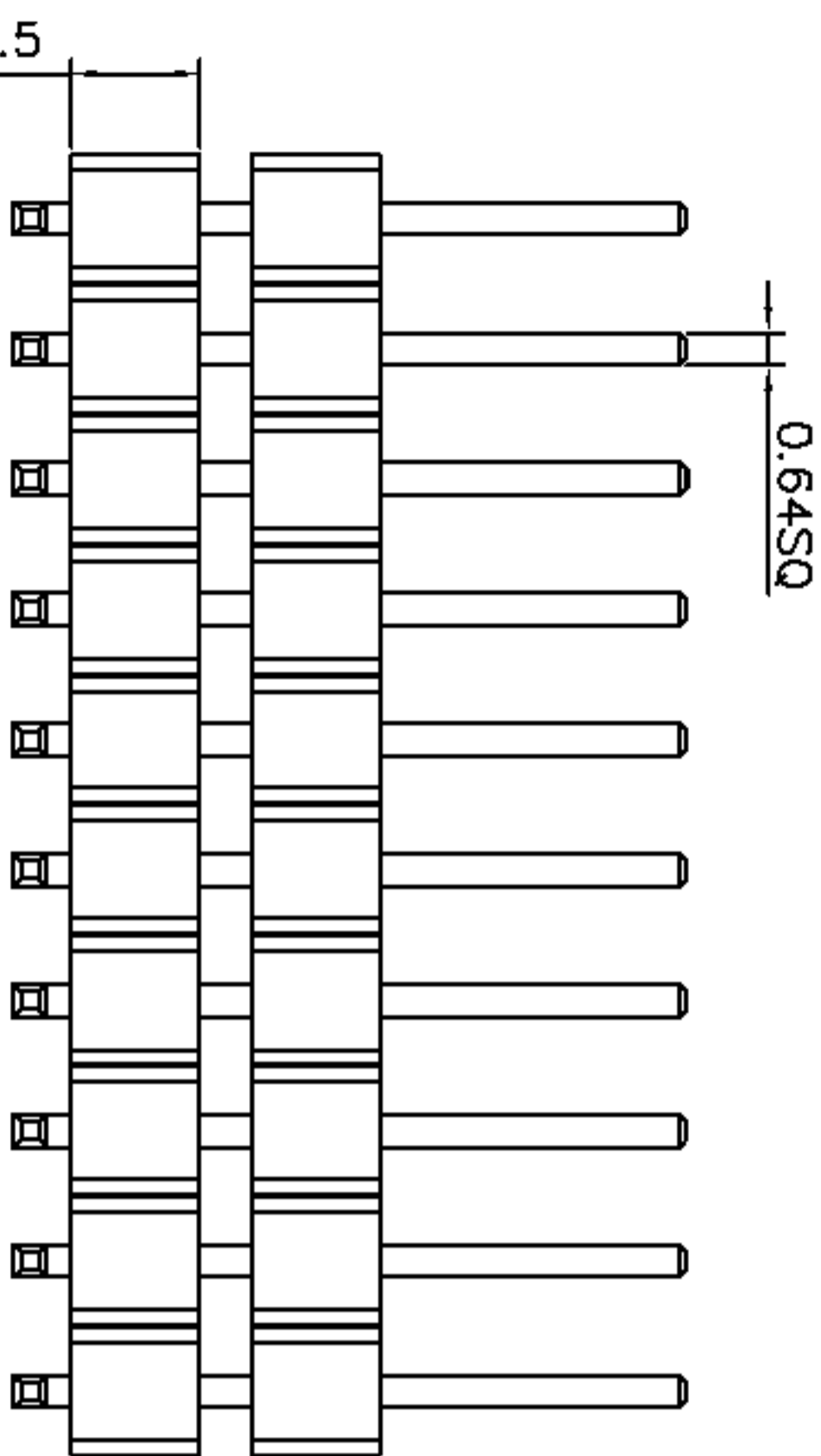
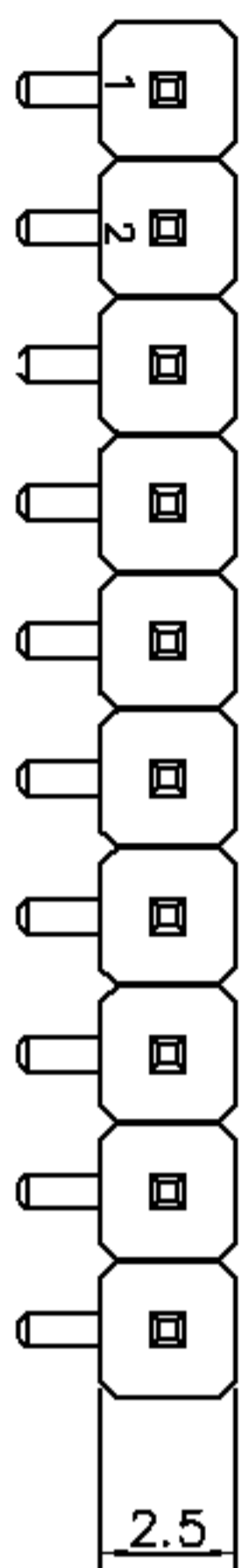


A				
	新版图	/	2012.05.23	L2M



PCB Layout

Technical Data:

Material:  
 Contact Material: Brass  
 Insulator Material: PBT+30%GF  
 Electrical:  
 Current rating: 3Amps/Contact max.  
 Contact resistance:  $\leq 20$  mOhms/Contact  
 Insulation resistance:  $\geq 1000$  MOhms at  $V=100V$   
 Withstanding Voltage: 550V AC/Minute  
 Mechanical:  
 Operating Temperature: Gold plated:  $-55^{\circ}C \sim 105^{\circ}C$   
 Tin plated:  $-40^{\circ}C \sim 105^{\circ}C$   
 Soldering Temperature:  $260^{\circ}C$  10s Max.

H、L、C、D的尺寸  
 可依客户要求订做

1.0/1.5/1.7/2.0/2.5



TOLERANCE		ANGLE	
TOL	ON	ANGLE	
.XXX =	0.05		
XX =	0.15	1°	
X -	0.20	2°	
X. =	0.30		

DRAWN	DATE	 武汉宇恒电子有限公司 WUHAN YUHENG ELECTRONIC CO., LTD
YSH	2012.05.23	
CHECKED	DATE	TITLE:
CLIENT APPROVED	DATE	排针系列-2.54 PIN距-单排-双塑 胶弯针
RFQ NO		
CLIENT P/N		
UNIT: mm	SCALE: free	
FILE NO.: YH20120529A002		