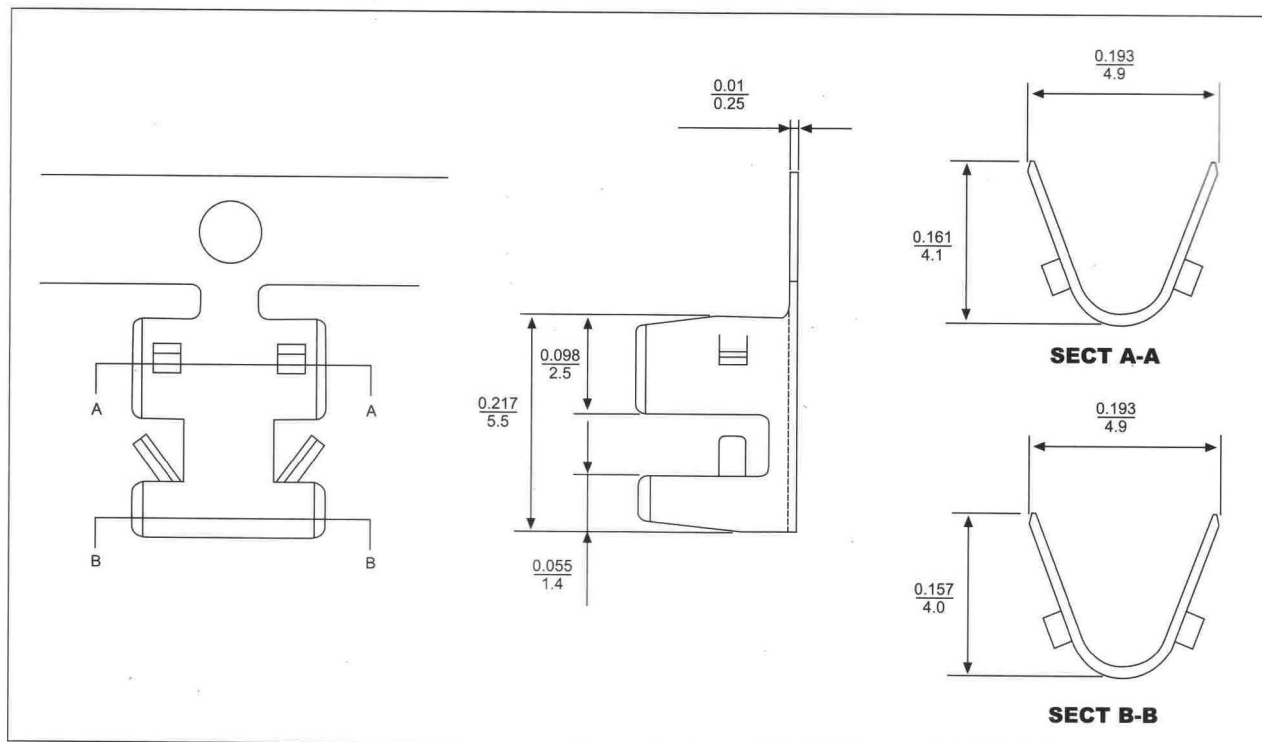


7617 P.C Board in Crimp Terminal

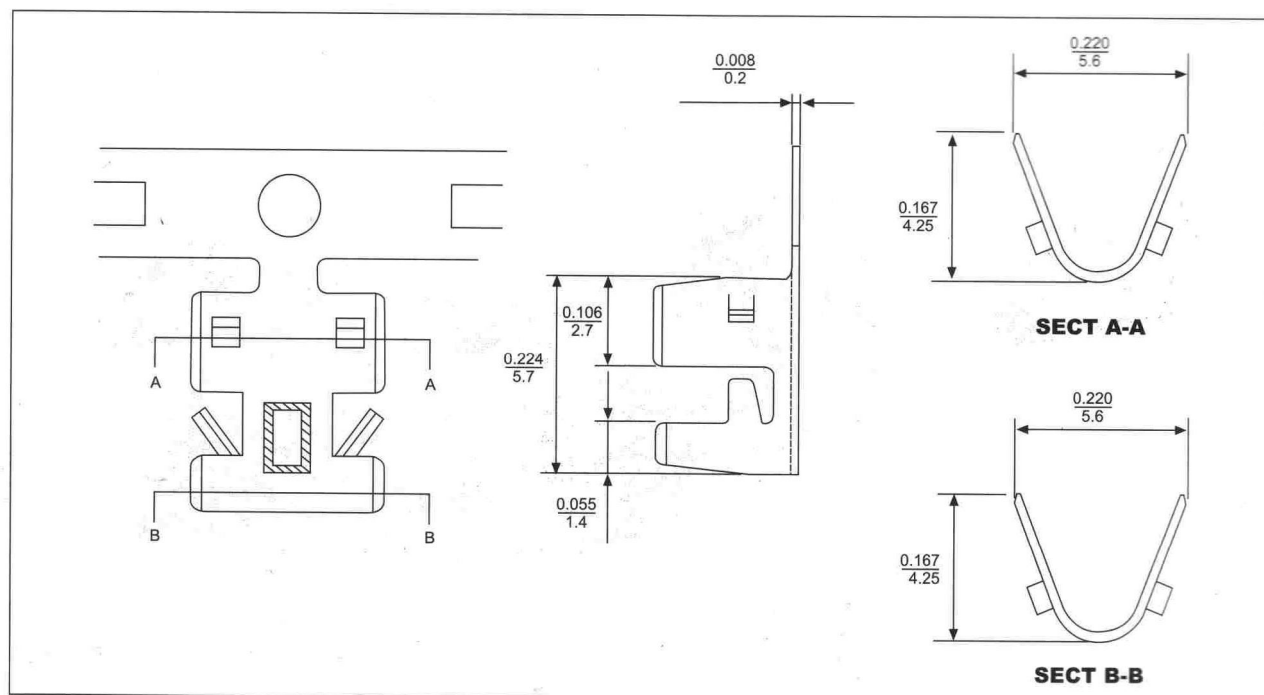


ORDER INFORMATION:

Dimension:inch/mm

Part No.	Material	Thickness	Finish	Wire Range	Q.ty/roll
7617T	Brass/phosphor.Bronze	0.25mm	Tin	AWG18-22	5.000PC

7620 P.C Board in Crimp Terminal



ORDER INFORMATION:

Dimension:inch/mm

Part No.	Material	Thickness	Finish	Wire Range	Q.ty/roll
7620T	Brass/phosphor.Bronze	0.2mm	Tin	AWG18-22	4.500PC