

# PCI Test Protector Cards

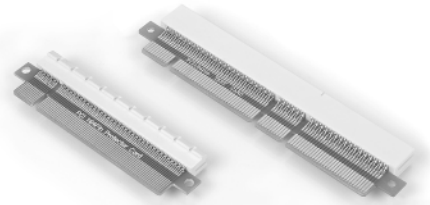
164/184Pin

## Series: PCI

### PCI with PCB Test Protector Card

#### Technical Specs:

Connector Housing:	Glass filled thermoplastic polyester
Flammability:	UL 94V-O
Connector Contact:	phosphor bronze
PCB Board:	FR-4
PCB Board Contact:	Phosphor Bronze
Contact pressure:	min 0.2 N per contact
Mechanical life:	min 200 cycles
Rated current:	0.75 A
Contact resistance:	max 20 mΩ
Dielectric strength:	min 300V RMS
Insertion resistance:	min 1000 MΩ



### Ordering information

PCI - NNN - C P P A

No. of Positions

Housing colour code

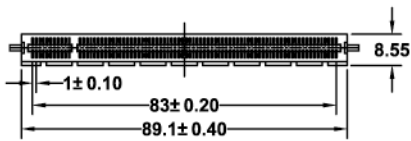
Connector Contact Plating code

PCB Contact Plating code

- 1 Black
- 2 Brown
- 3 White

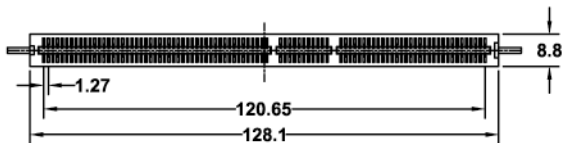
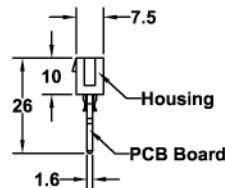
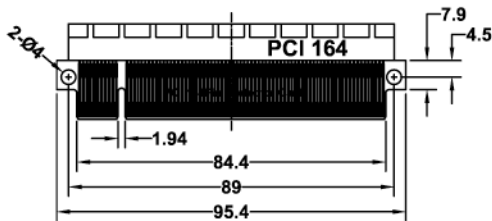
- 3 Tin/GF
- 4 Tin/Gold2μ"
- 5 Tin/Gold3μ"
- 6 Tin/Gold10μ"
- 7 Tin/Gold15μ"

- 3 GF
- 4 Gold2μ"
- 5 Gold3μ"
- 6 Gold10μ"
- 7 Gold15μ"



PCI-164-CPA

PCI 164Pin Protector Card  
Contact space: 1.0mm



PCI-184-CPA

PCI 184Pin Protector Card  
Contact space: 1.27mm

