

NOTES:

*Material

Body : Nylon66+30%G.F or PBT+30%G.F, UL 94V-0 Rated.
 Color: White or Black.
 Contacts : Brass or Phosphor Bronze.
 Plating: Gold plating over Nickel on contact area;
 Tin Plating On Solder Tail.
 CAV.NO.:A~H.

*Mechanical:

Insertion Force: 1.15N max per contact pair;
 Withdrawal Force: 0.15N min per contact pair;
 Contact Retention Force: 4.9N min per contact;

*Electrical Specification

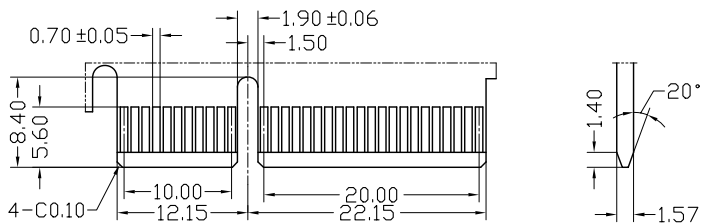
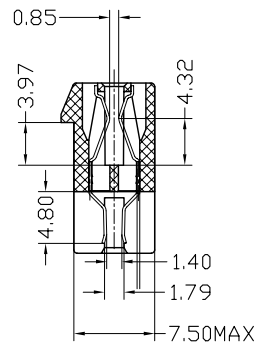
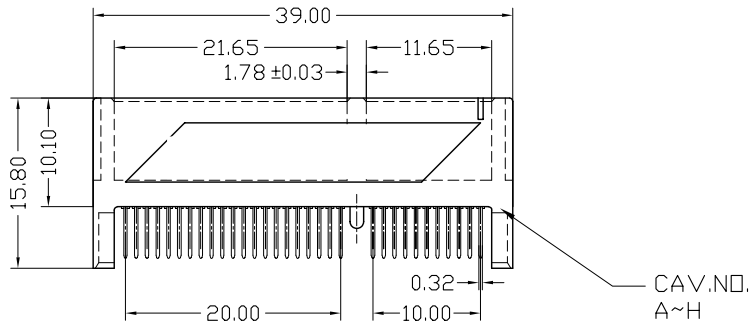
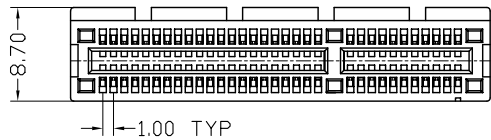
Contact Resistance : 30 Milliohms Max.
 Current Resistance : 1.1 Ampere
 Insulation Resistance : 1000 Megohms Min, At 500V AC.
 Operating Temperature : -55°C to +105°C

*How to order:

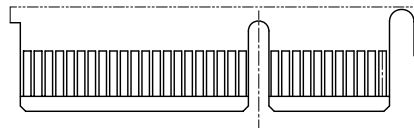
WPES-036 A N 1 B 5 1 U W

PCI Express ——— W:Winning Mark
 Strip Form Pin ——— U:Lead Free
 Number of Contact ——— Blank:Sn Pb
 Gold A:Flash B:5u" C:10u" ——— 1:None Post
 N:Nylon66 B:PBT ——— 5:Straddle Type(Groove)
 1:Black 3:White ——— B:Brass
 P:Phosphor Bronze

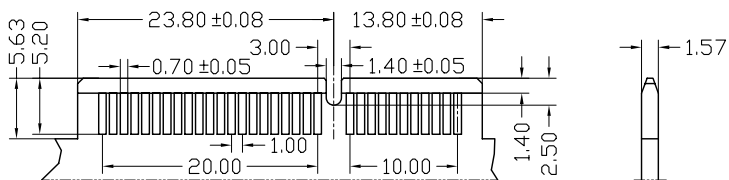
REV	Units	mm	Scale	Drawing By	Data						
	Tolerance Unless Otherwise Specified			Lulu							
	.X	~	±0.38	Roger		Date	07/28/05	Title	PCI Express Connector 36 Pin Strip Form Pin Straddle(Groove)		
	.XX	~	±0.25			Sheet					
	.XXX	~	±0.20	Richard		Third Angle Projection					
	Angle	~	± 3°					Drawing No.	W050616	REV	A



PRIMARY (COMPONENT) SIDE



SECONDARY (SOLDER) SIDE



P.C.B. Layout For Straddle

NOTES:

*Material

Body: Nylon66+30%G.F or PBT+30%G.F, UL 94V-0 Rated.
 Color: White or Black.
 Contacts: Brass or Phosphor Bronze.
 Plating: Gold plating over Nickel on contact area;
 Tin Plating On Solder Tail.
 CAV.NO.:A~H.

*Mechanical:

Insertion Force: 1.15N max per contact pair;
 Withdrawal Force: 0.15N min per contact pair;
 Contact Retention Force: 4.9N min per contact;

*Electrical Specification

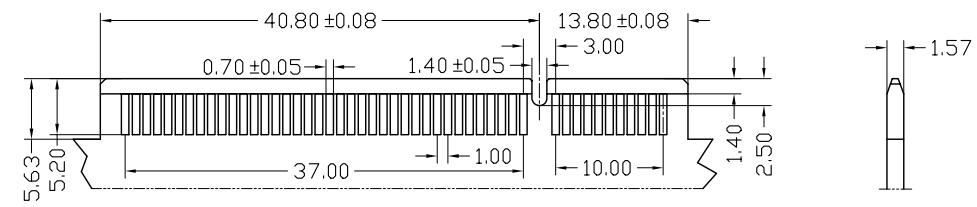
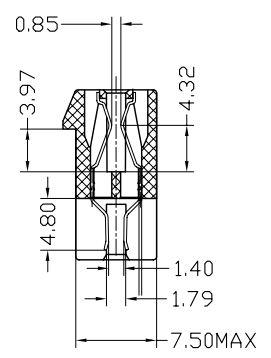
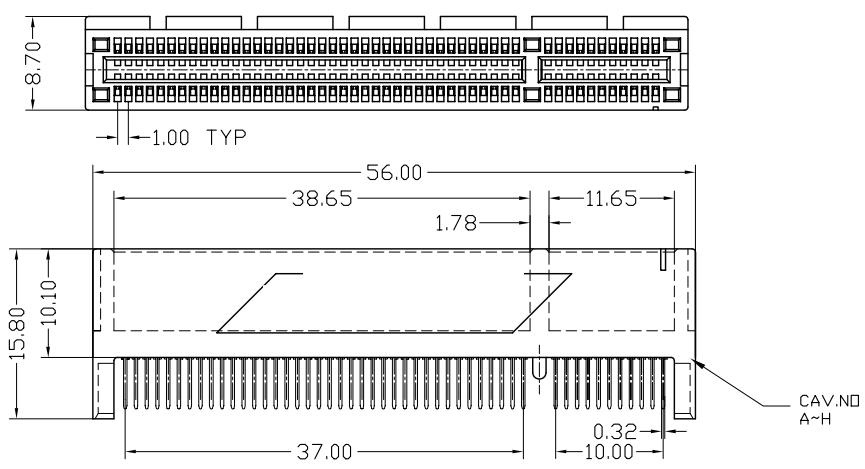
Contact Resistance : 30 Milliohms Max.
 Current Resistance : 1.1 Ampere
 Insulation Resistance : 1000 Megohms Min, At 500V AC.
 Operating Temperature : -55°C to +105°C

*How to order:

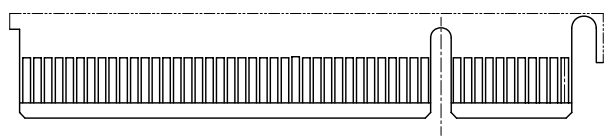
W P E S - 0 6 4 A N 1 B 5 1 U W

PCI Express ——— W:Winning Mark
 Strip Form Pin ——— U:Lead Free
 Number of Contact ——— Blank:Sn Pb
 Gold A:Flash B:5u" C:10u" ——— 1:None Post
 N:Nylon66 B:PBT ——— 5:Straddle Type(Groove)
 1:Black 3:White ——— B:Brass
 P:Phosphor Bronze

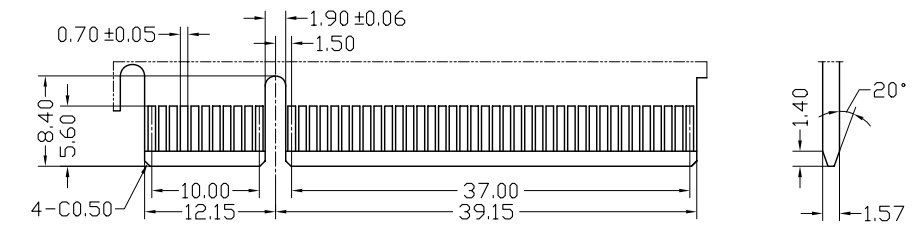
REV	Units	mm	Scale	Drawing By	Data
				Lulu	
	Tolerance Unless Otherwise Specified			Reviewed By	Data
	.X	~	±0.38	Roger	
	.XX	~	±0.25	Approval By	Data
	.XXX	~	±0.20	Richard	
	Angle	~	± 3°		
Date	Sheet	1 of 1	Title	PCI Express Connector 64 Pin Strip Form Pin Straddle(Groove)	
	Third Angle Projection	Drawing No.	W050616	REV	A



P.C.B. Layout For Straddle



SECONDARY (SOLDER) SIDE



PRIMARY (COMPONENT) SIDE

NOTES:

***Material**

Body: Nylon66+30%G.F or PBT+30%G.F, UL 94V-0 Rated.
 Color: White or Black.
 Contacts: Brass or Phosphor Bronze.
 Plating: Gold plating over Nickel on contact area;
 Tin Plating On Solder Tail.
 CAV.NO.:A~H.

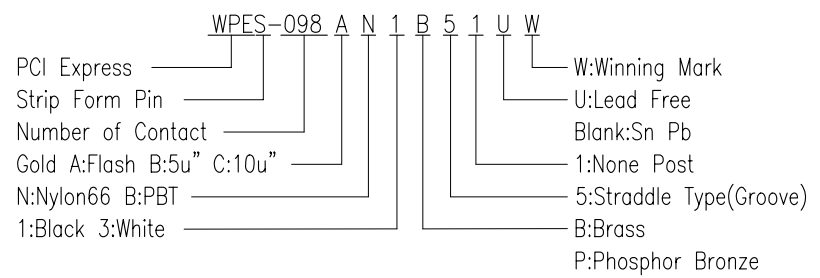
***Mechanical:**

Insertion Force: 1.15N max per contact pair;
 Withdrawal Force: 0.15N min per contact pair;
 Contact Retention Force: 4.9N min per contact;

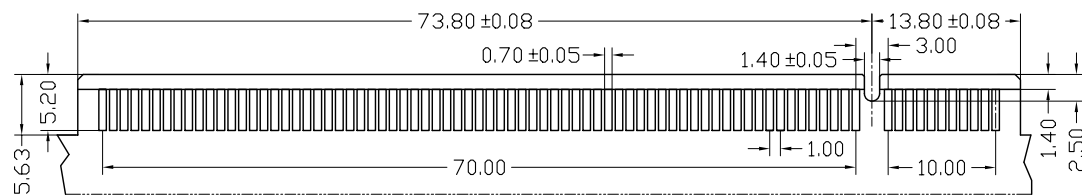
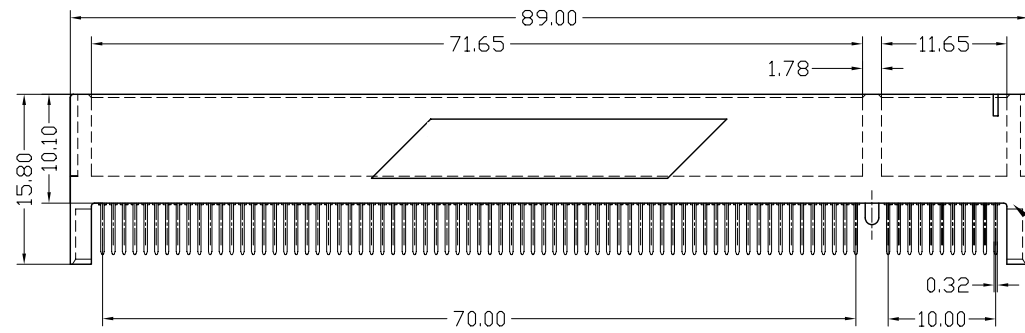
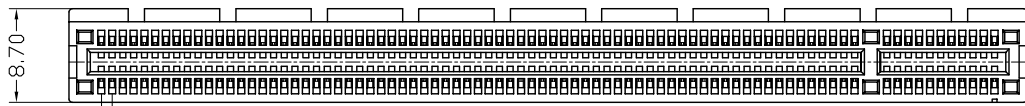
***Electrical Specification**

Contact Resistance : 30 Milliohms Max.
 Current Resistance : 1.1 Ampere
 Insulation Resistance : 1000 Megohms Min, At 500V AC.
 Operating Temperature : -55°c to +105°c

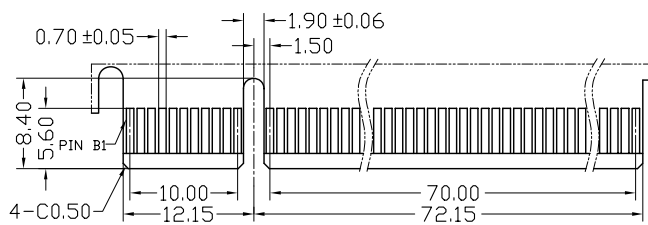
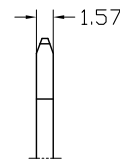
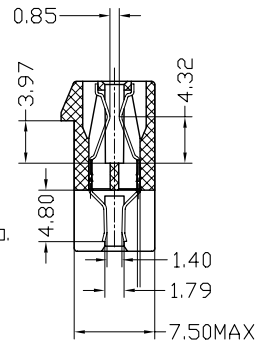
***How to order:**



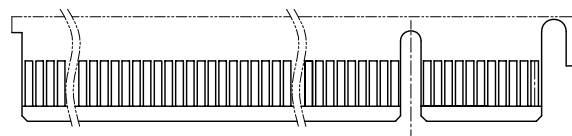
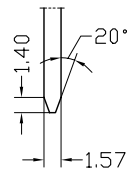
REV	Units	mm	Scale	Drawing By	Data				
				Lulu					
	Tolerance Unless Otherwise Specified			Reviewed By	Data	Date	Sheet	Title	
	.X	~	±0.38	Roger		1 of 1	PCI Express Connector 98 Pin Strip Form Pin Straddle(Groove)		
	.XX	~	±0.25	Approval By	Data	Third Angle Projection			
	.XXX	~	±0.20	Richard					
	Angle	~	± 3°			Drawing No.	W050616	REV	A



P.C.B. Layout For Straddle



PRIMARY (COMPONENT) SIDE



SECONDARY (SOLDER) SIDE

NOTES:

***Material**

Body: Nylon66+30%G.F or PBT+30%G.F, UL 94V-0 Rated.
 Color: White or Black.
 Contacts: Brass or Phosphor Bronze.
 Plating: Gold plating over Nickel on contact area;
 Tin Plating On Solder Tail.
 CAV.NO.:A~H.

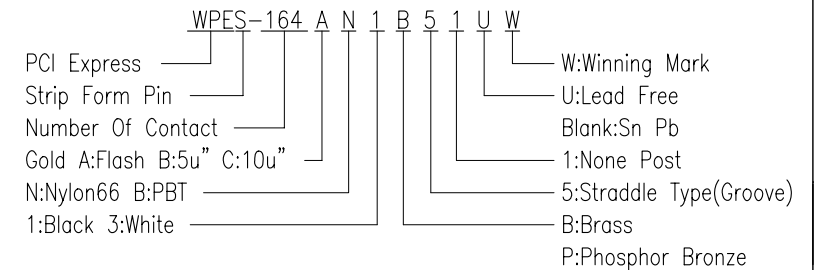
***Mechanical:**

Insertion Force: 1.15N max per contact pair;
 Withdrawal Force: 0.15N min per contact pair;
 Contact Retention Force: 4.9N min per contact;

***Electrical Specification**

Contact Resistance : 30 Milliohms Max.
 Current Resistance : 1.1 Ampere
 Insulation Resistance : 1000 Megohms Min, At 500V AC.
 Operating Temperature : -55°c to +105°c

***How to order:**



REV	Units	mm	Scale	Drawing By	Data
				Lulu	
	Tolerance Unless Otherwise Specified			Reviewed By	Data
	.X	~	±0.38	Roger	
	.XX	~	±0.25	Approval By	Data
	.XXX	~	±0.20	Richard	
	Angle	~	± 3°		

Date		Title	PCI Express Connector 164 Pin Strip Form Pin Straddle(Groove)
Sheet	1 of 1		
Third Angle Projection		Drawing No.	W050616
		REV	A